

Windows Product Key Finder

User Guide

Contents

- About
- Benefits
- Requirements
- Installation
- Supported License Keys
- Using GUI Version
- Windows Product Key Report Generation
- Settings
 - Settings - Selecting License Keys
 - Settings - Recover Keys from Multiple Sources
 - Settings - Automatic Backup feature
- Automatic Backup Database Feature
 - Loading backup database file
- Recovering Windows Keys from Local Computer
- Recovering Windows Keys from External Disk
- Recovering Windows Keys from Windows folder

- Recovering Windows Keys from Registry Hive File
- Recovering Windows Keys from Remote Computer
 - Examples for Remote Computer/Remote IP Address Range
 - Remote Computer Recovery Requirements
 - Remote Computer Detection using PING
- Using Command-line Version
- Automation of Windows License Key Recovery
- Contact XenArmor Support Center

About Windows Product Key Finder

Windows Product Key Finder is the enterprise software to help you instantly recover your **lost or forgotten Windows License Keys**. It can also help you find license CD Keys of **200+ popular softwares** including MS Office, MS SQL Server, Adobe, Norton Anti-virus, VMWare, Winamp etc.

Not only from local computer but it can also find **Windows License Keys from External Disk, Registry Hive Files or Remote Computers on your network**. Also it can generate automatic backup database file for every recovery operation.



Benefits of Windows Product Key Finder

Here are the main benefits for you,

- Instantly recovers your lost or forgotten Windows License Keys
- Recover CD Keys of **200+ popular softwares** including Office, IE, SQL Server, Adobe, VMWare etc.
- [Recover License keys from Remote Computers on your Network](#)
- [Recover License keys from Registry Hive File](#)
- [Recover License keys from External Disk](#)
- [Recover License keys from Windows folder](#) of another Operating System or computer
- Create Windows Key Recovery Report in HTML/CSV report
- Settings to customize License Keys, Source & Backup process
- Displays detailed status during the operation
- [Automatically generates Backup Database file for every recovery operation](#)
- Command-line version help you integrate it in your scripts/programs
- Automate your Windows License Key Recovery operation daily or periodically
- Works on all Windows 32-bit & 64-bit starting from XP to Windows 10
- Standard Installer for easier installation & un-installation

Requirements

Windows Product Key Finder works on both 32-bit & 64-bit platforms starting from Windows XP to **Windows 10**.

Here are the specific details,

Installation Size: 15 MB

RAM: 4 GB+ Recommended

Operating System: Windows XP, Vista, Windows 2008/2012/2016, Windows 7/8/10.

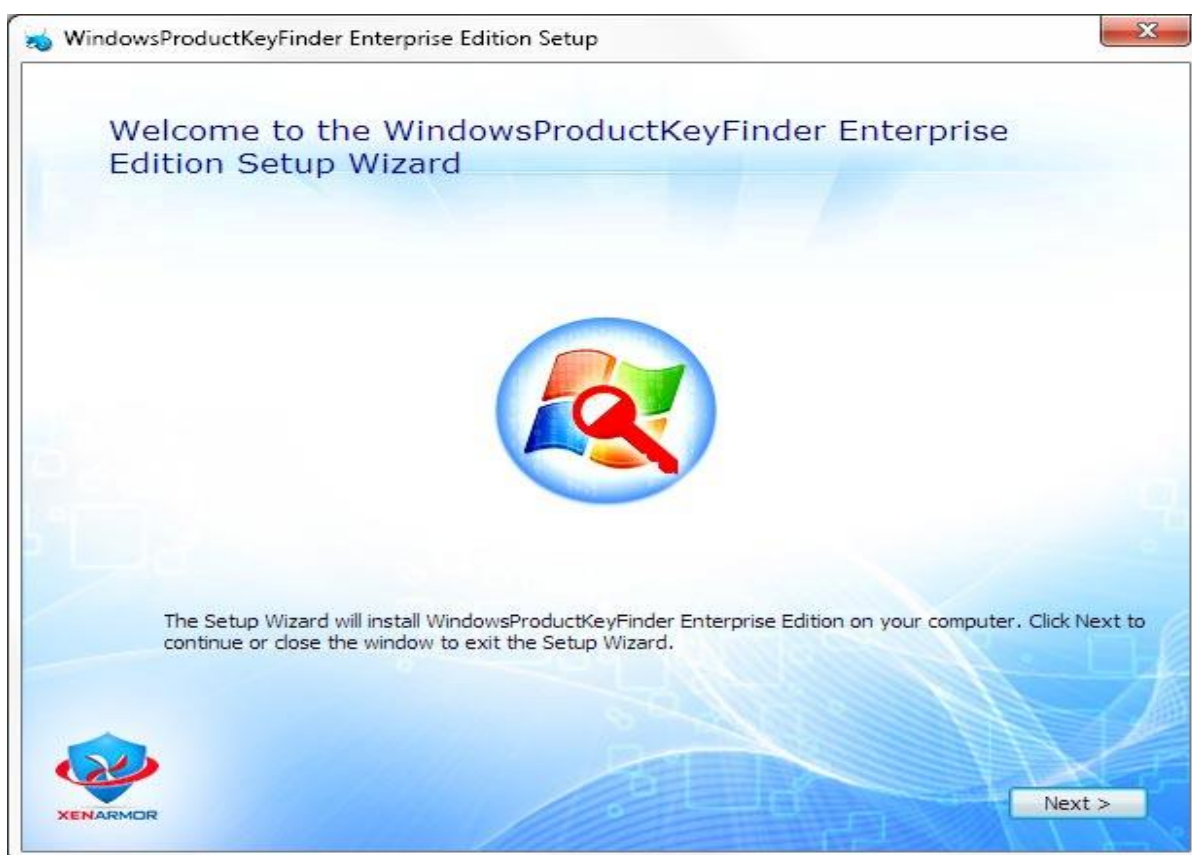
Note: mobile/pads/non-windows devices not supported

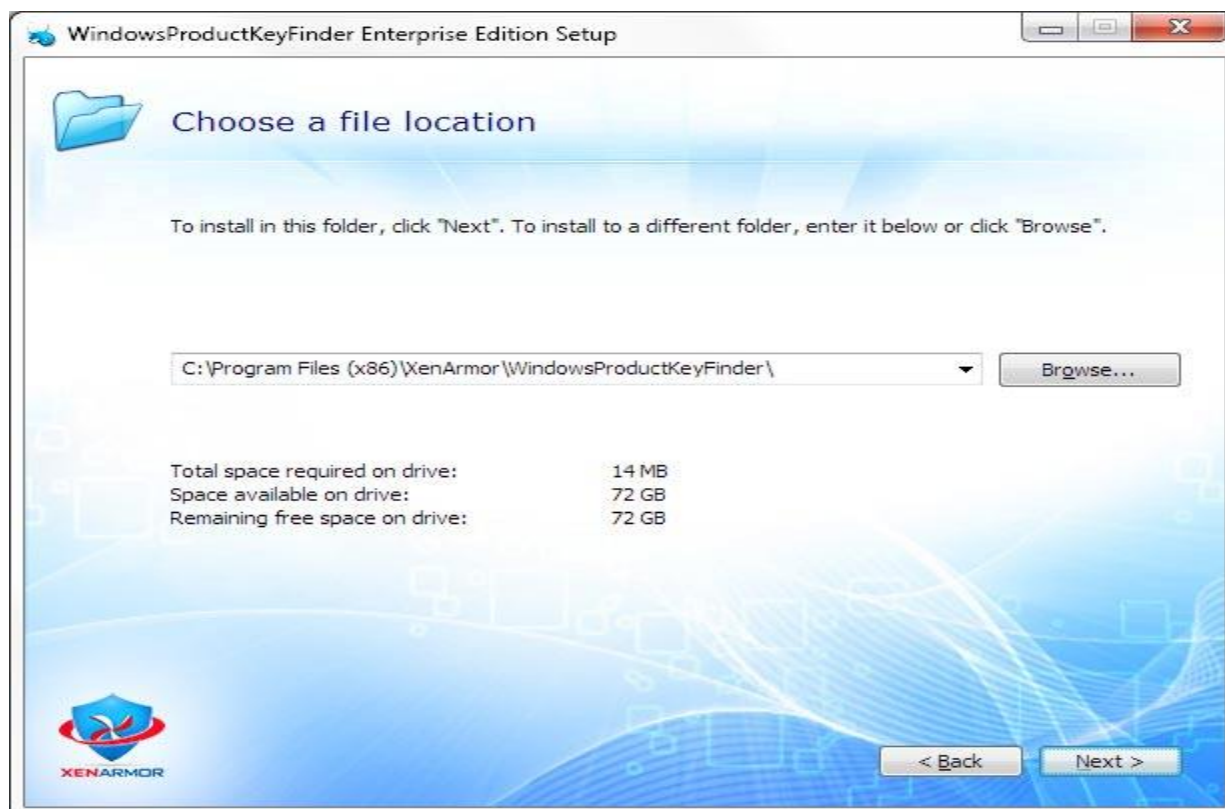
www.XenArmor.com

Installation

Windows Product Key Finder comes with standard windows installer which allows seamless installation & un-installation.

Launch the setup file and follow on-screen instructions to complete the installation as shown below,





You can un-install it from the **Control Panel** or click on **Uninstaller** from Installed location of Windows Product Key Finder

Supported Windows Product License Keys

Windows Product Key Finder helps you to recover License Keys following Windows products,

- Microsoft Windows (XP/2003/2008/2012/Vista/Windows 7/8/10)
- Microsoft Office
- Microsoft Exchange Server
- Microsoft SQL Server
- Internet Explorer
- Microsoft Visual Studio

It also support license key recovery of **over 200 popular softwares**. Here is some of the popular ones from that list,

- ACDSee
- Adobe Acrobat, Creative Suite, Photoshop etc
- Arcsoft Panorama Maker
- Ashampoo Burning Studio
- AutoCAD, LT, Building Systems etc
- Autodesk 3ds Max
- Avira AntiVir
- Axialis IconWorkshop
- Beyond Compare
- Borland Delphi
- CorelDRAW Graphics Suite
- Corel VideoStudio
- Cyberlink PowerDVD DX
- ElcomSoft All Password Recovery Suites
- Futuremark 3DMark
- Internet Download Manager
- IsoBuster
- Macromedia Dreamweaver Studio MX
- Macromedia Flash MX
- MagicISO
- Malwarebytes Anti-Malware
- Nero, Vision, Media Player etc
- Norton Antivirus, PartitionMagic
- PCTools Registry machanic
- PowerQuest PartitionMagic
- RealVNC Enterprise Edition
- Roxio My DVD
- Scansoft Omnipage Professional
- Slysoft AnyDVD & CloneDVD
- Sony Sound Forge, Vegas, ACID XMC etc
- SuperCleaner
- Symantec Norton Internet Security
- Techsmith Camtasia Studio
- Trend Micro PC-cillin Antivirus
- TuneUp Utilities
- VMWare Workstation
- Winamp
- Winzip
- ZoneAlarm

Using GUI Version

Windows Product Key Finder is very easy to use. After installation, just launch it. It will instantly recover and show all the Windows license keys from your local computer as shown below,



You can easily sort the displayed password list based on Source List, Product Name, Version, License Key etc. by simply clicking on corresponding header in the List. You can also **right click on any entry in the list** to quickly & easily copy various fields such as Product Name, License keys etc.

You can click on Settings to recover License Keys from remote computer, registry hive file, external disk etc. For more details refer to '**Settings**' section below

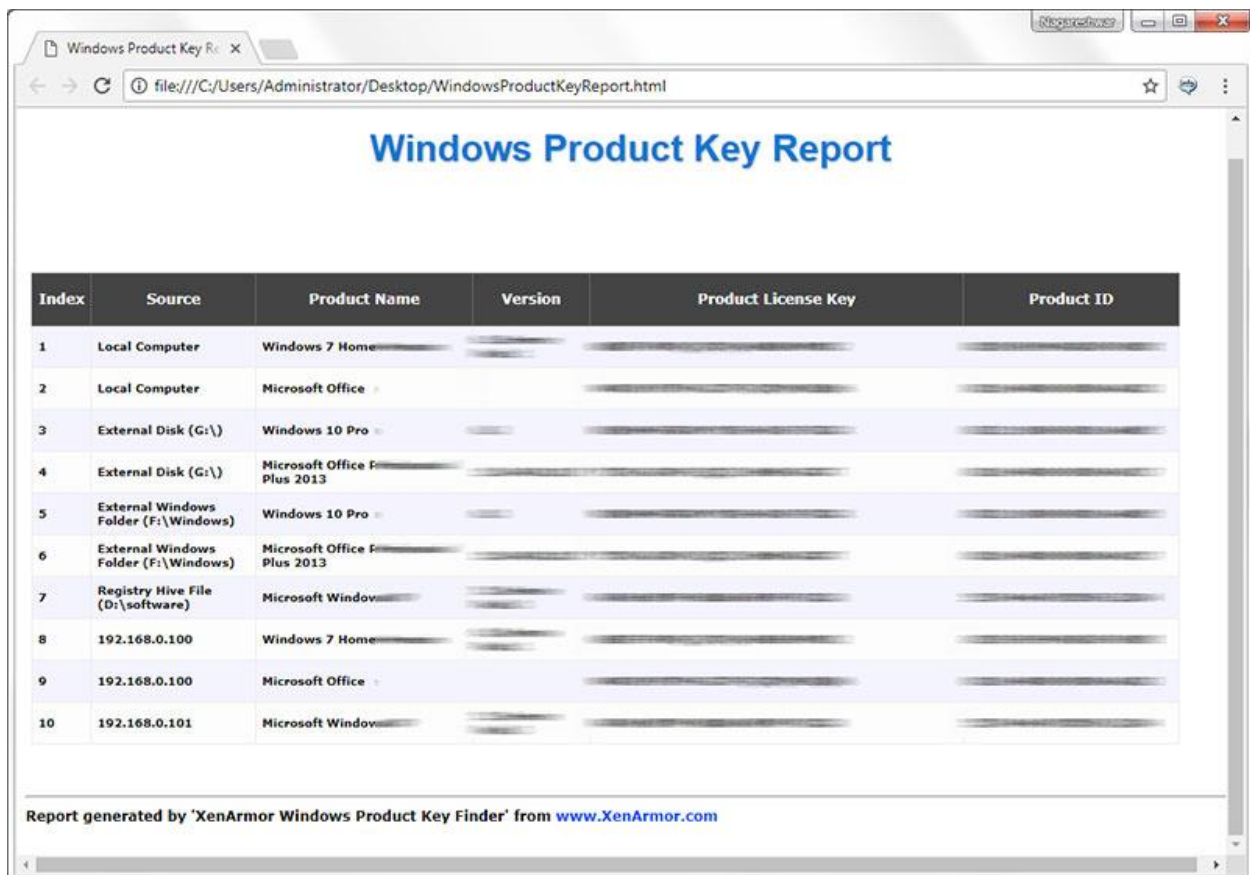
During recovery operation, you can click on "**Stop Recovery**" to abort it anytime. Also it will display detailed status of current task being performed.

Finally you can recover the keys again by simply clicking on 'Start Recovery'.

Windows Product Key Report Generation

Windows Product Key Finder helps you to generate detailed report in both HTML & CSV format. Once license keys are recovered, simply click on Report button and then [select the Type of Report \(HTML or CSV\)](#) from the 'File Save Dialog'.

Here is the sample of HTML report,



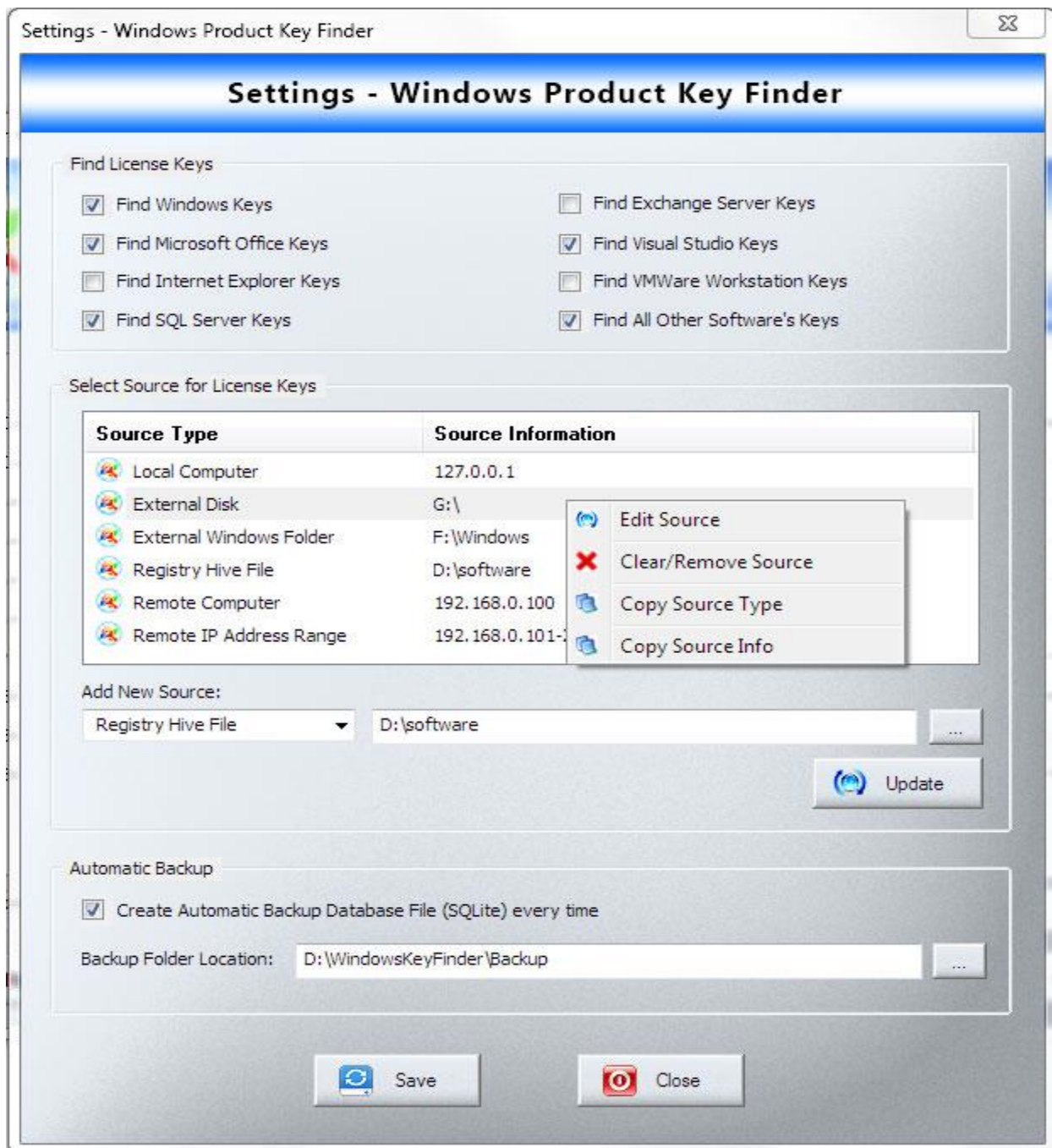
Index	Source	Product Name	Version	Product License Key	Product ID
1	Local Computer	Windows 7 Home			
2	Local Computer	Microsoft Office			
3	External Disk (G:\)	Windows 10 Pro			
4	External Disk (G:\)	Microsoft Office Plus 2013			
5	External Windows Folder (F:\Windows)	Windows 10 Pro			
6	External Windows Folder (F:\Windows)	Microsoft Office Plus 2013			
7	Registry Hive File (D:\software)	Microsoft Windows			
8	192.168.0.100	Windows 7 Home			
9	192.168.0.100	Microsoft Office			
10	192.168.0.101	Microsoft Windows			

Report generated by 'XenArmor Windows Product Key Finder' from www.XenArmor.com

Settings

Settings help you to tweak & customize Windows Product Key Recovery operations such as selecting License Keys to recover, Source List and automatic backup options.

Click on '**Settings**' button from the main GUI screen and you will see the 'Settings' window as shown below,



Settings - Selecting License Keys

First section "**Find License Keys**" helps you to select or deselect the products. Simply select the product for which you want to recover keys from & click on **SAVE** button to save the changes.

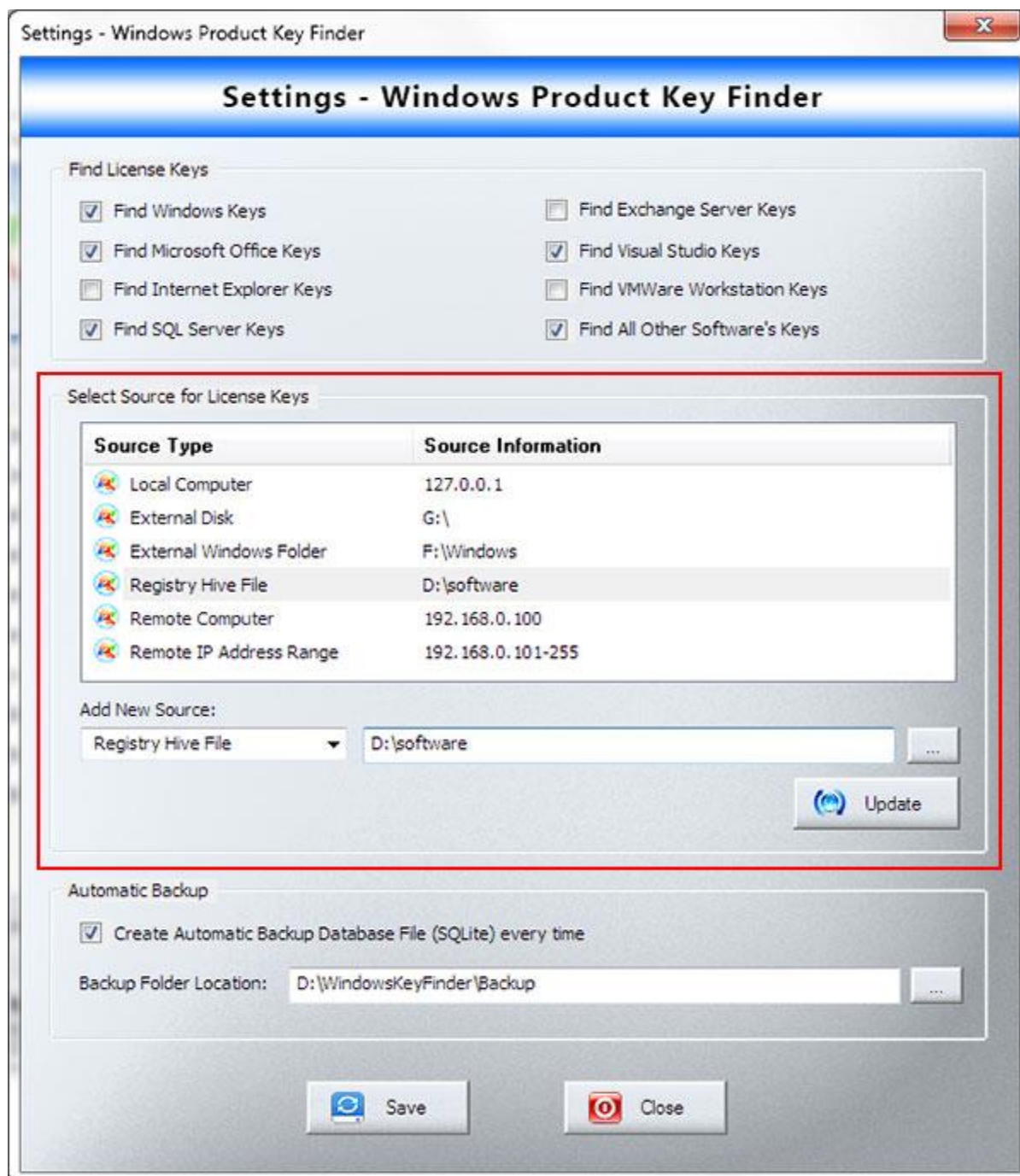
Settings - Recover Keys from Multiple Sources

This is one of the unique feature of Windows Product Key Finder. It helps you to recover Windows license keys from multiple sources such as,

- External Disk
- Registry Hive File
- Remote Computer
- Range of Remote Computers on Network
- Windows Folder of different OS or Computer

Here are simple steps to setup or remove the Source List

- Launch the Settings window & move to second section "Select Source for License Keys"
- Now select the Source Type by double clicking in the List or select from Combo box below the list
- It will populate the current entry(if any) in the Edit box
- Now you can add or edit the entry by manually typing or clicking on Browse button or doing Drag & Drop of your file/folder
- To REMOVE the entry, just keep the Edit box empty
- Finally click on 'Update' button to add/remove the Source Type
- Once done, you will see new Source Type is updated in the list
- Once updated, click on Save button to save the changes
- You can also right click on the Source List to quickly Edit or Remove Source Type



For "Local Computer" source type, you can simply edit and click on update to enable it. To remove "Local Computer", right click on it and click on "Clear/Remove Source".

Note that this feature is available only in Enterprise Edition.

Settings - Automatic Backup feature

Settings help you enable and customize Automatic Backup options such as Backup folder location. Once updated, click on '**Save button**' to save the changes. By default automatic backup feature is disabled.

For more details refer to section "Automatic Backup Database Feature" below

Automatic Backup Database Feature

This is the unique feature of Windows Product Key Finder. It helps you automatically generate backup database file (SQLite DB) for every license key recovery operation. This will be useful for future references and auditing.

By default this feature is disabled. You can enable it by going to Settings & selecting '**Create Automatic...**' in "Automatic Backup" section. Also specify the "**Backup Folder Location**" where all the backup database files will be created.

Here is the screenshot of configuring Automatic Backup Settings,

Settings - Windows Product Key Finder

Settings - Windows Product Key Finder

Find License Keys

☒ Find Windows Keys ☐ Find Exchange Server Keys

☒ Find Microsoft Office Keys ☒ Find Visual Studio Keys

☐ Find Internet Explorer Keys ☐ Find VMWare Workstation Keys

☒ Find SQL Server Keys ☒ Find All Other Software's Keys

Select Source for License Keys

Source Type	Source Information
Local Computer	127.0.0.1
External Disk	G:\
External Windows Folder	F:\Windows
Registry Hive File	D:\software
Remote Computer	192.168.0.100
Remote IP Address Range	192.168.0.101-255

Add New Source:

Registry Hive File ...

Update

Automatic Backup

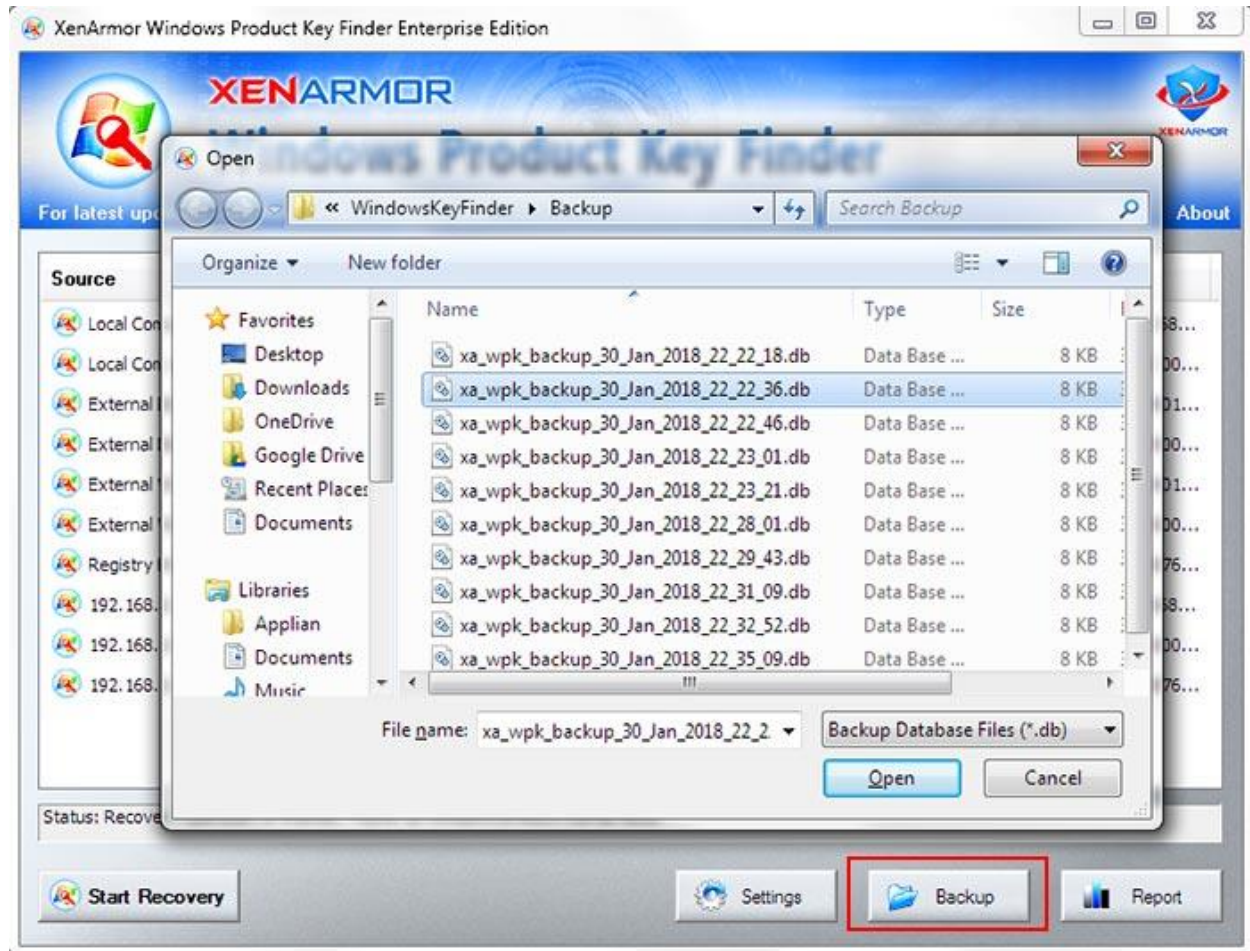
☒ Create Automatic Backup Database File (SQLite) every time

Backup Folder Location: ...

Save Close

Loading Backup Database File

Windows Product Key Finder creates backup files in SQLite database format. So you can use any SQLite browser tools to view it.



Also you can open it directly by clicking on "**Backup**" button in the main application and then selecting the right Backup database file or simply drag & drop your file onto main application.

Recovering Windows Keys from Local Computer

By default, Windows Product Key Finder helps you to recover all Windows and third party license keys from Local Computer.

You can enable or disable it using Settings as explained above in "**Settings - Recover Keys from Multiple Sources**".

Recovering Windows Keys from External Disk

Windows Product Key Finder helps you to recover license keys from External Disk belonging to another Computer.

Simply connect the disk to your computer and select the Drive (typically C:\) containing Operating System as [External Disk](#) type in the Settings as explained in "**Settings - Recover Keys from Multiple Sources**".

Also if it does not recover any license keys (especially Windows 7 or higher) then run it as Administrator.

Note that this feature is available only in Enterprise Edition.

Recovering Windows Keys from Windows folder

Windows Product Key Finder helps you to recover license keys from Windows folder belonging to another operating system on the same or different computer.

In the Settings window, simply select the "[External Windows Folder](#)" as source type and select the Windows folder as explained in "**Settings - Recover Keys from Multiple Sources**".

Also if it does not recover any license keys (especially Windows 7 or higher) then run it as Administrator.

Note that this feature is available only in Enterprise Edition.

Recovering Windows Keys from Registry Hive File

Windows Product Key Finder helps you to recover license keys from Registry Hive File (Software) of another operating system.

Registry Hive Files are the files representing different section of Registry and typically stored in "C:\Windows\system32\config\" folder. You have to simply select file named **"Software"** and set it as **"Registry Hive File"** type in the Settings as explained in **"Settings - Recover Keys from Multiple Sources"**

If you are confused then simply use the External Disk or Windows Folder source type (as explained in above sections) to specify the disk/folder and Windows Product Key Finder will pick the right file for you.

Also if it does not recover any license keys (especially Windows 7 or higher) then run it as Administrator.

Note that this feature is available only in Enterprise Edition.

Recovering Windows Keys from Remote Computer

Windows Product Key Finder helps you to recover license keys from single Remote Computer or range of Remote Computers on your Network.

In the Settings window, simply select the **"Remote Computer"** or **"Remote IP Address Range"** as source type and enter the details as explained in "Settings - Recover Keys from Multiple Sources"

Note that this feature is available only in Enterprise Edition.

Examples for Remote Computer

You can either enter the IP address or name of the computer connected to your local network as shown below,

192.168.0.100
MyWinLaptop

Examples of Remote IP Address Range

It helps you to perform license key recovery from all the computers in your local network (256*256 computers or *.*.0.0/16) in one go. Below are the examples,

```
// perform scan & recovery from 256 computers  
192.168.5.1-255
```

```
// perform scan & recovery from 256*256 computers  
192.168.0.0-255.255
```

Important: You must have Admin access and configure the Remote Computer properly to recover license keys as explained in the next section.

Remote Computer Recovery Requirements

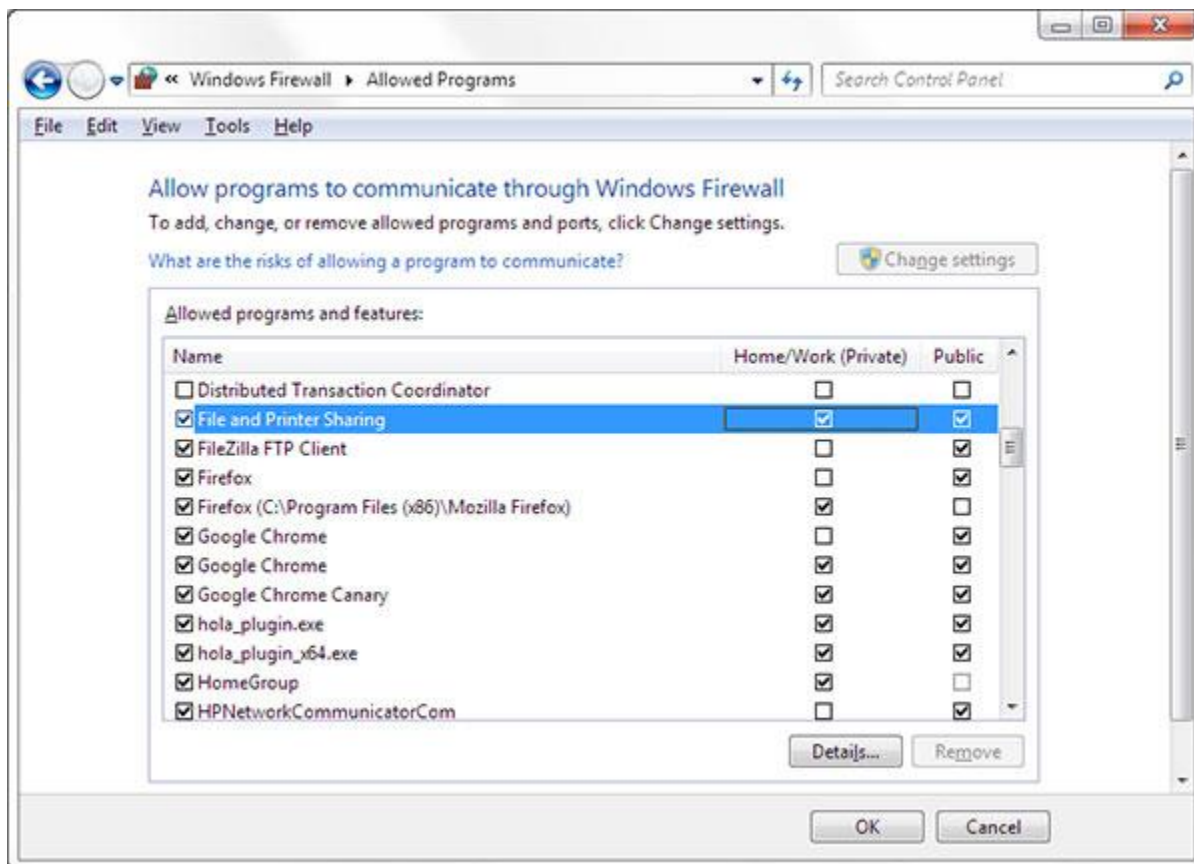
In order to recover license keys from any Remote Computer on your network, you must have admin access and configure it as explained below.

If your network has a Domain Controller and you have admin access to this domain then some of these settings are made automatically when remote computer joins the domain.

Here are the detailed mandatory steps to recover keys from Remote Computer

1) Configure your Firewall to Allow 'File And Printer Sharing'

On the Remote Computer, configure your Firewall to allow 'File And Printer Sharing' as shown below,



2) Set Network Security & Sharing Mode to Classic

On the Remote Computer, Edit the following Registry settings to set the Network Security & Sharing mode to Classic.

[HKEY_LOCAL_MACHINE\SOFTWARE\Microsoft\Windows\CurrentVersion\Policies\System]
 "LocalAccountTokenFilterPolicy"=dword:00000001

3) Turn off the Remote User Account Control

On the Remote Computer, Edit the following Registry settings to turn off Remote User Account Control in Windows Vista/Windows 7/8/10 operating systems.

[HKEY_LOCAL_MACHINE\SOFTWARE\Microsoft\Windows\CurrentVersion\Policies\System]
 "LocalAccountTokenFilterPolicy"=dword:00000001

4) Starting the 'Remote Registry' service

Remote Registry service needs to be running on remote computer to access & recover the license keys.

To start it, on the remote computer launch the Service Manager from Control Panel or type **services.msc** in Windows -> Run and start "**Remote Registry**" service

Note that Remote Registry service is started by default in Windows XP. In some of the Windows 10 systems, you need to restart it manually every time system is restarted as it is set to Auto Trigger Start.

5) Connecting the Remote Computer with Admin Rights

Finally connect to remote computer from your computer. You need to connect to admin (admin\$) or similar shares (c\$, d\$ etc) as shown below.

On your computer, launch the command prompt and then connect to admin\$ share on remote computer using the command shown below,

```
net use \\192.168.0.101\admin$ "password" /user:"administrator"
```

You may have to restart the Remote Computer on completion.

Once all the above steps are done successfully, you can proceed to add it in Settings as explained in "Settings - Recover Keys from Multiple Sources". Then click on Start Recovery to recover the license keys from this remote computer.

Remote Computer Detection using PING

By default Windows Product Key Finder performs PING check to verify if Remote Computer is alive or not to speed up the operations.

If you want to disable it (especially when PING is blocked in your firewall etc) then you can disable the same through following Registry Settings

```
[HKEY_CURRENT_USER\Software\XenArmor\WindowsProductKeyFinder\Settings]  
"bHostPingCheck"=dword:00000000
```

Using Command-line Version

Windows Product Key Finder supports both GUI & command-line in the single executable file. Command-line version helps you to fully automate Windows license key recovery operation. You can also easily [integrate it into your scripts or programs](#) as part of advanced operations.

Here are various command-line options & examples

WindowsProductKeyFinder.exe [report.html | report.csv]

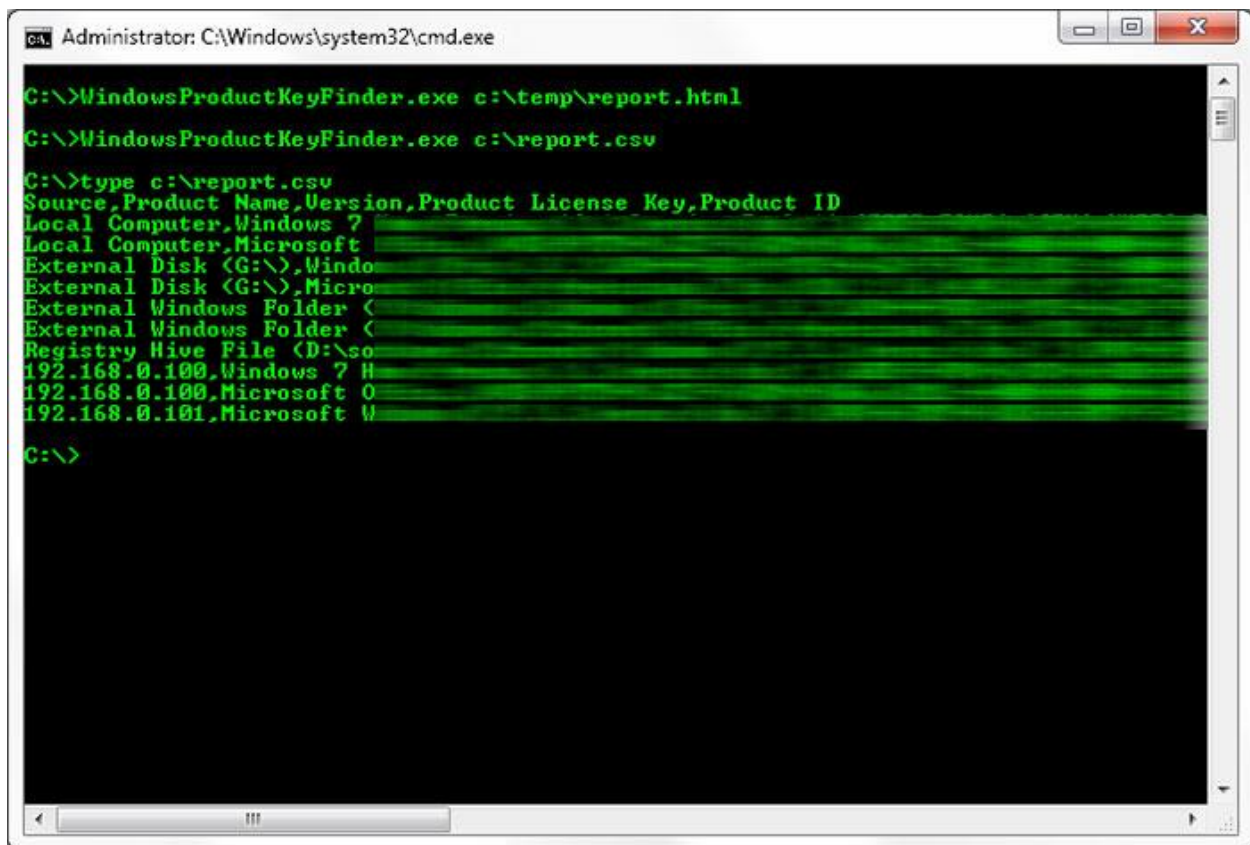
```
//Recover & Save the Windows Product Key Report in HTML format (default)
WindowsProductKeyFinder.exe report.html
```

```
//Recover & Save the Windows Product Key Report to CSV file locally
WindowsProductKeyFinder.exe report.csv
```

```
//Save the Windows Product Key Report to selected folder
WindowsProductKeyFinder.exe "c:\my reports\report.html"
```

By default it will generate report in HTML format. You can specify CSV extension to Output File to generate report in CSV format.

Here is the screenshot of Command-line version ([Run cmd.exe as Administrator](#))



```
Administrator: C:\Windows\system32\cmd.exe

C:\>WindowsProductKeyFinder.exe c:\temp\report.html
C:\>WindowsProductKeyFinder.exe c:\report.csv
C:\>type c:\report.csv
Source,Product Name,Version,Product License Key,Product ID
Local Computer,Windows 7
Local Computer,Microsoft
External Disk (G:\),Windo
External Disk (G:\),Micro
External Windows Folder (
External Windows Folder (
Registry Hive File (D:\so
192.168.0.100,Windows 7 H
192.168.0.100,Microsoft 0
192.168.0.101,Microsoft W
C:\>
```

Important: Command-line version uses the same settings configured by GUI version. So you can use **Settings in GUI version** to customize your license key recovery operation and then use the command-line version.

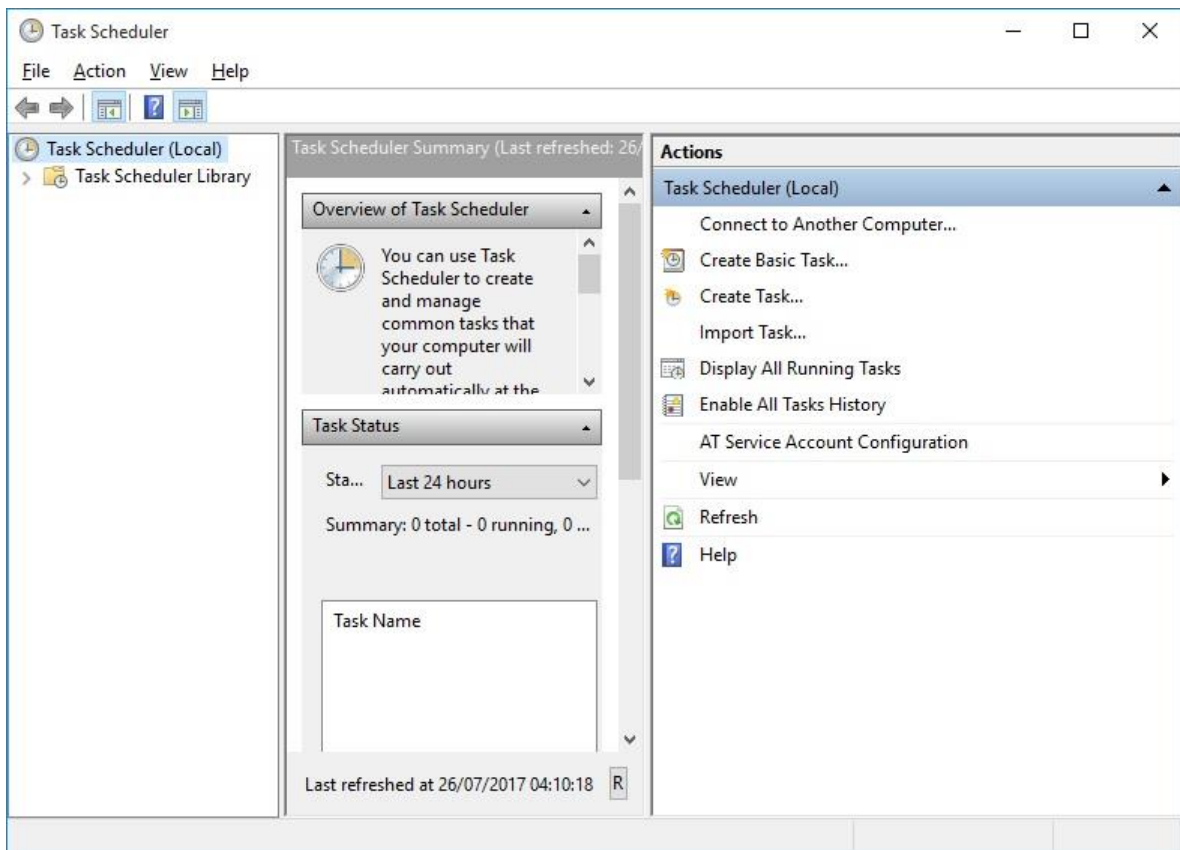
Note that Command-line version is available only in Enterprise Edition.

Automation of Windows License Key Recovery

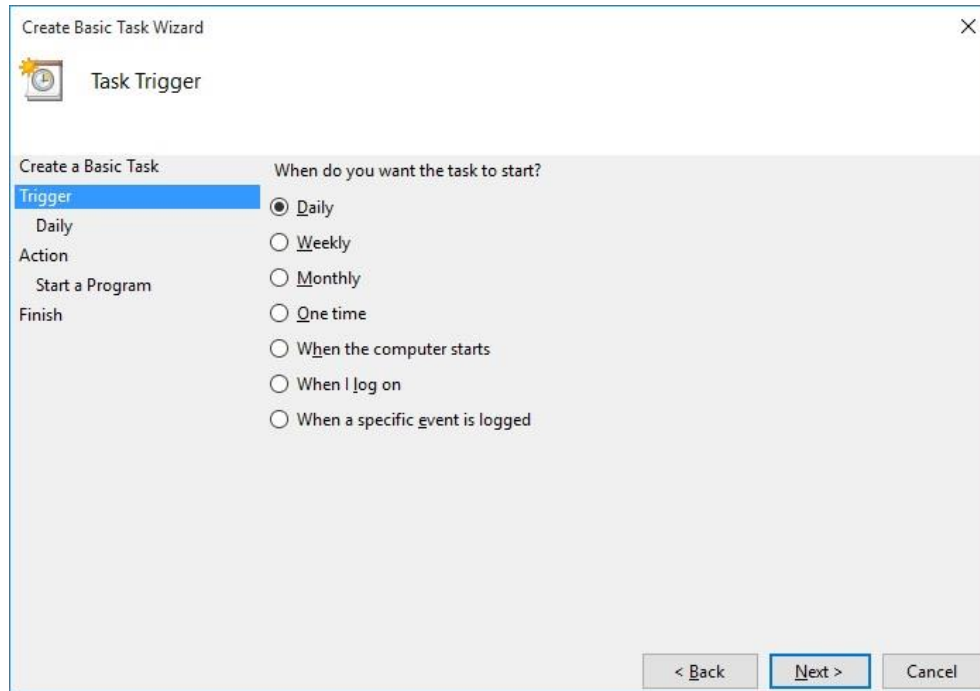
Windows Product Key Finder **Command-line version** can help you **to completely automate your License Key Recovery operations** daily or periodically. It can generate detailed report in CSV or HTML format which can be used for future auditing or backup purposes.

Here are simple steps to automate Windows License Key Recovery using **Windows Task Scheduler**.

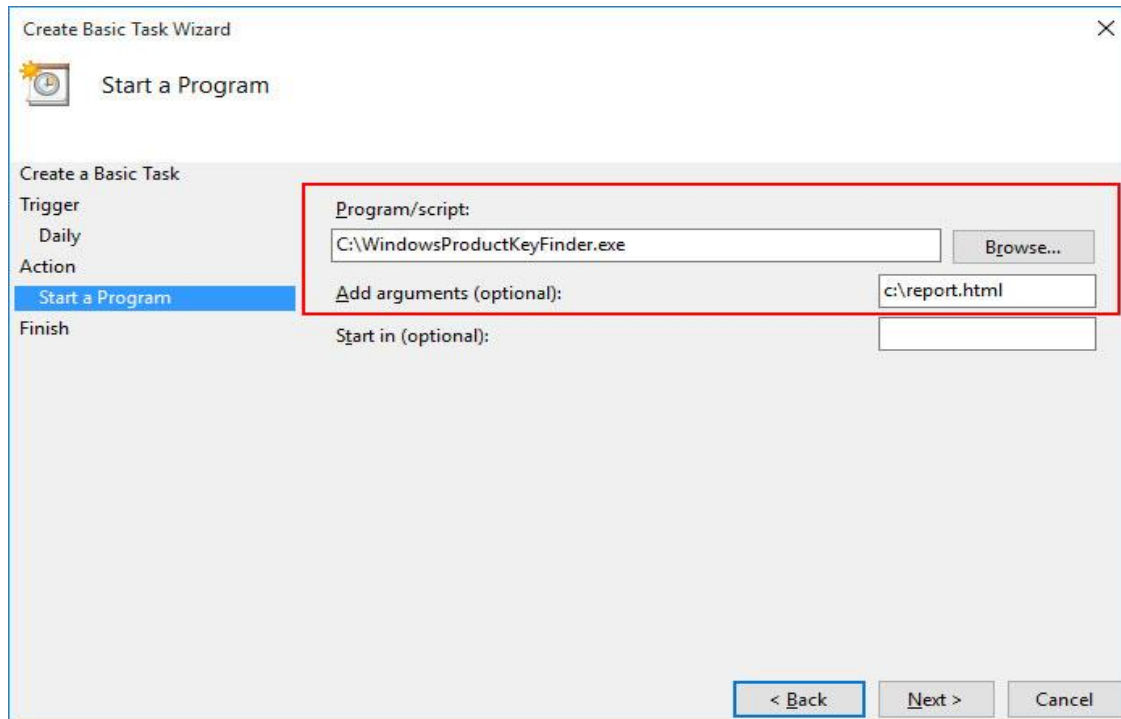
1) Launch Windows Task Scheduler from Administrative Tools in Control Panel. Next click on "Create Basic Task" on right side panel as shown below,



2) On the Basic Task page, enter name as 'Windows Product Key Recovery'. On next page select 'Daily or Weekly or Monthly' with appropriate Time settings as per your need.

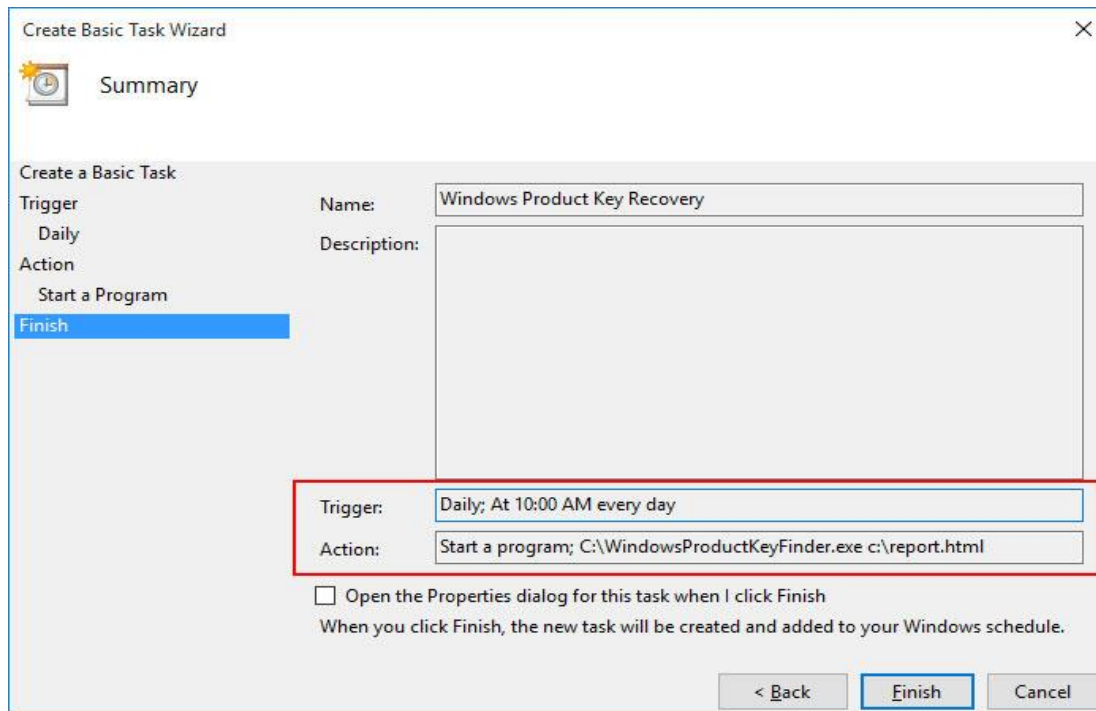


3) Next on the 'Action' Page, click on Start Program and then enter command & arguments as shown below,



For more command-line options refer to Windows Product Key Finder Command-line Version section.

4) Finally click on Finish button to schedule the automatic Windows License Key Recovery operation.



Contact XenArmor

Have any more queries or need any technical clarification? Just write to us at support@xenarmor.com and you will have response within 24 to 48 hours.

For more details visit home page of [Windows Product Key Finder](#)



www.XenArmor.com