

SeDapp

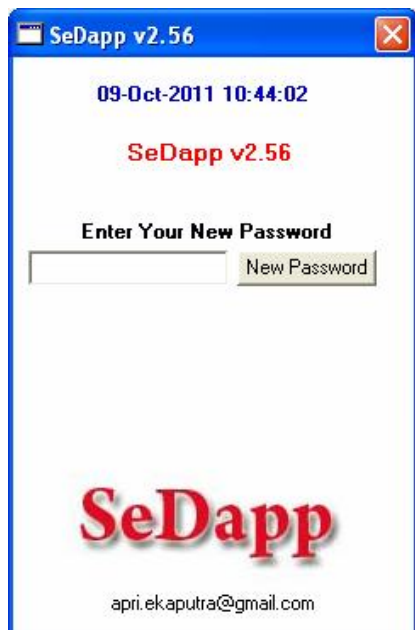
(Simple Secure Desktop)

SeDapp which restricts or forced to close applications that are not registered on the list of applications that are allowed, for example: viruses, worms, illegal applications, spyware, malware and others. Applications that you allow to be run on Windows must be registered in SeDapp, outside it will be forced closed. But also can remove the list again if it felt necessary (professional version).

Another feature of SeDapp is an auto computer shutdown when idle for 2 hours (free version) and can be adjusted as needed (professional version).



Right click systray SeDapp in the bottom right corner of the screen, click Show



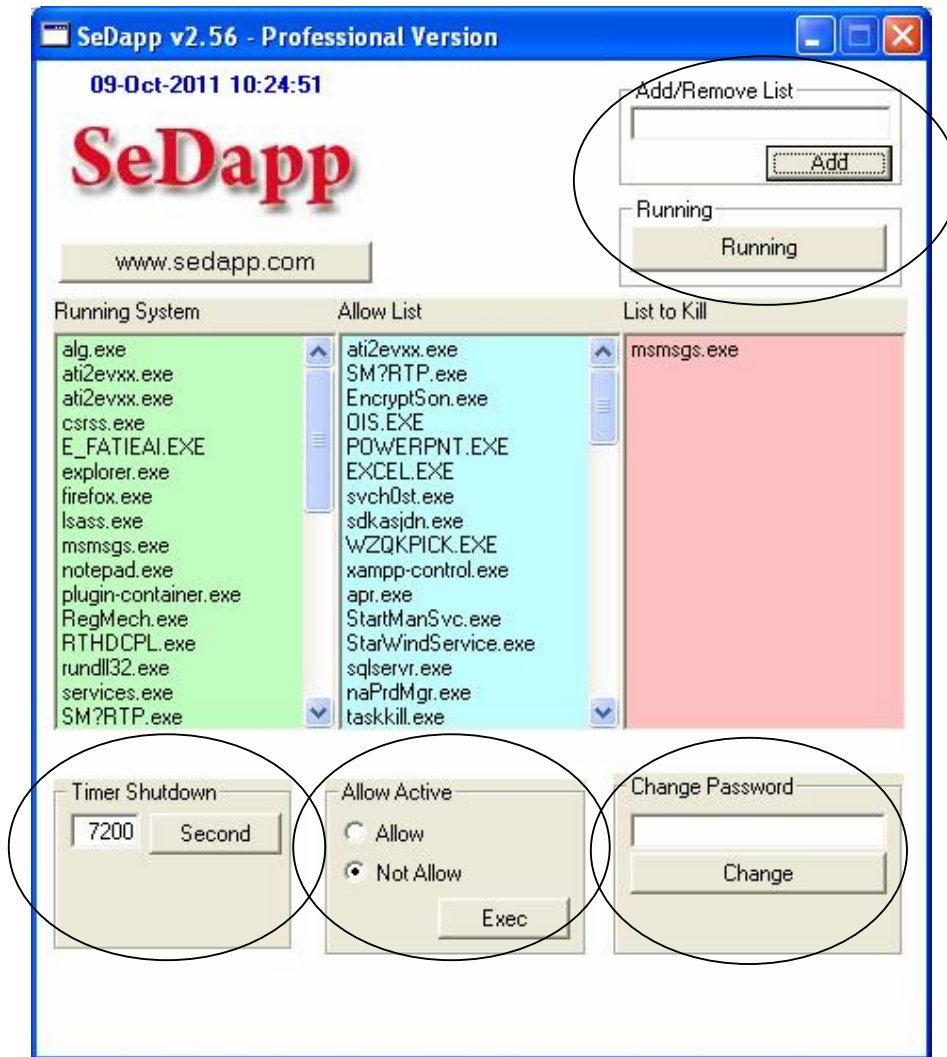
The initial Display SeDapp administration, input the new password when just starting out



If the correct password will appear three menus, ie:

- *Main Show for all menu settings*
- *Uninstall to remove the application*
- *Close to exit while the application*

Settings menu after click Main Show



- List to Kill: the list of applications that will be forced to shut down which is a comparison between the files listed on Running System and the Allow List.
- To add the Allow List is click on List to Kill and then click the Add button.
- To reduce the Allow List is click on the Allow List and then click the Remove button.
- Allow Active: to allow or not allow applications to run and who will be forced shut down there on the list List to Kill, for the first time with the default Not Allow.
- Shutdown Timer: for setting how long in seconds to auto shutdown the computer, ie: max min 70 seconds and 18.000 seconds (5 hours)
- Change Password: To change the password.

Info:

<http://www.gangsawo.com/>