



# 2004 Edge

Business Management Solution

## *installation guide*



10126 Residency Road  
Manassas, VA  
20110-2007

<b>Toll Free Number</b>	1 (800) 283-0999
<b>Direct/Local</b>	(703) 368-2887
<b>Fax</b>	(703) 368-2393

[sales@idsscan.com](mailto:sales@idsscan.com)

# edge 2004<sup>™</sup> installation guide



## Edge 2004<sup>™</sup> INSTALLATION GUIDE

You **must** have administrative privileges on the computer to install this product. “**Power Users**” may install this product as well.

The Edge 2004<sup>™</sup> installation program can be run from any workstation with a CD-ROM drive, as long as it meets the necessary requirements.

### Hardware & Software Compatibility

Edge 2004<sup>™</sup> was designed to be used in the average office environment as a stand-alone product or enterprise solution. In order to accommodate the wide variations in office equipment, IDSS designed Edge 2004<sup>™</sup> to work with a lower hardware threshold. The minimum requirements are as follows: *Note: minimum requirements will change with customization and as new modules are added*

#### Hardware

PC w/ 600 MHz w/ 128 MB RAM  
500 MB free space  
24X CD-ROM or DVD drive  
3.5 Floppy Drive  
Tape Backup Unit (4GB)  
17” Monitor  
Super VGA (1024 x 768) or higher resolution video adapter and monitor.  
8 MB Video Controller  
100 BaseT NIC  
TWAIN compliant scanner

#### Operating Systems:

Windows 2000 Professional & Server (SP 4), Windows XP Home Edition & Professional (SP 1)

#### Scanners:

Fujitsu  
Kodak  
Acer  
VIDAR  
Ricoh

#### Computers:

Acer Open	Entire Line of Computers, Servers, Raid and scanning products
Hewlett Packard	Systems
Compaq	Systems
Gateway	Systems
DELL	Systems

# edge 2004 installation guide

## Storage:

Western Digital	Storage Products
Seagate	Storage Products
Quantum	Storage Products
Hewlett Packard	Storage Products
Iomega	Storage Products
SONY	Storage Products

## To install Edge 2004™ Software:

1. Close all applications. It is always a good idea to close other programs before installing new software to eliminate interference.
2. Insert Edge 2004™ CD into the CD-ROM drive or open the Edge2004.zip file. If you are online, download and save Edge 2004™ locally on your system, then open it.
3. If you do not have **Windows Installer** on your computer (**Windows Installer** is built into **Windows XP**), the Edge 2004™ installation will install **Windows Installer** first. It may ask you to reboot your computer.
  - a. If installing from the Edge2004 CD-ROM the **Auto Run** feature will start the installation and display the **Edge 2004 Installation** window.
  - b. If installing from the web you should first download and save the file locally on your system and then open it. Locate the **Setup.exe** file. Opening the **Setup.exe** file will display the **Edge 2004 Installation** window.
4. To begin the installation, select the **Install Edge 2004** option.

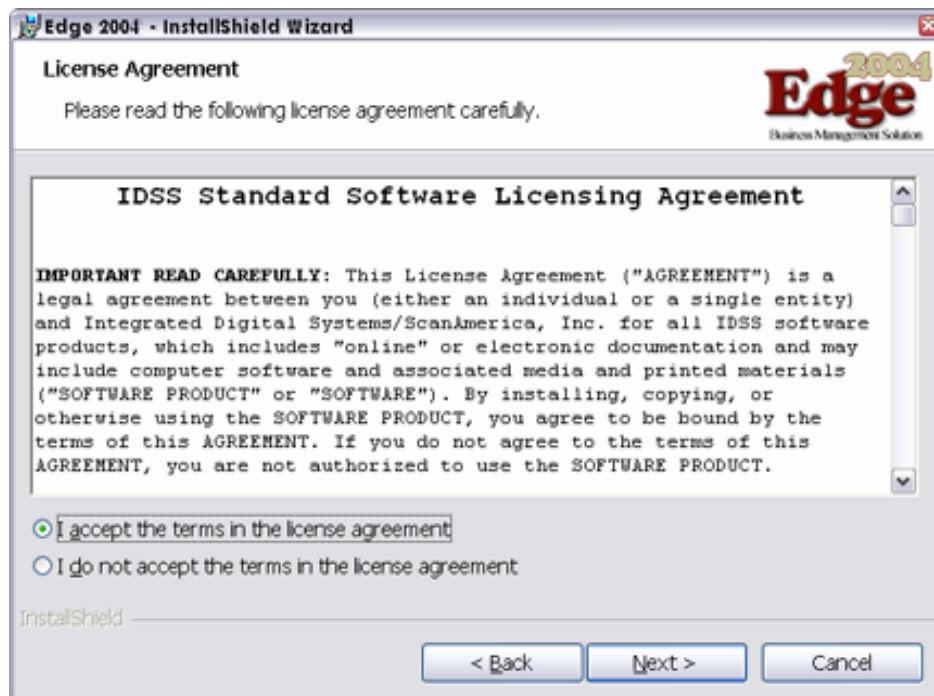


# edge 2004 installation guide

5. Welcome to the InstallShield Wizard for Edge 2004.



6. Click the **Next** button for the **License Agreement**.



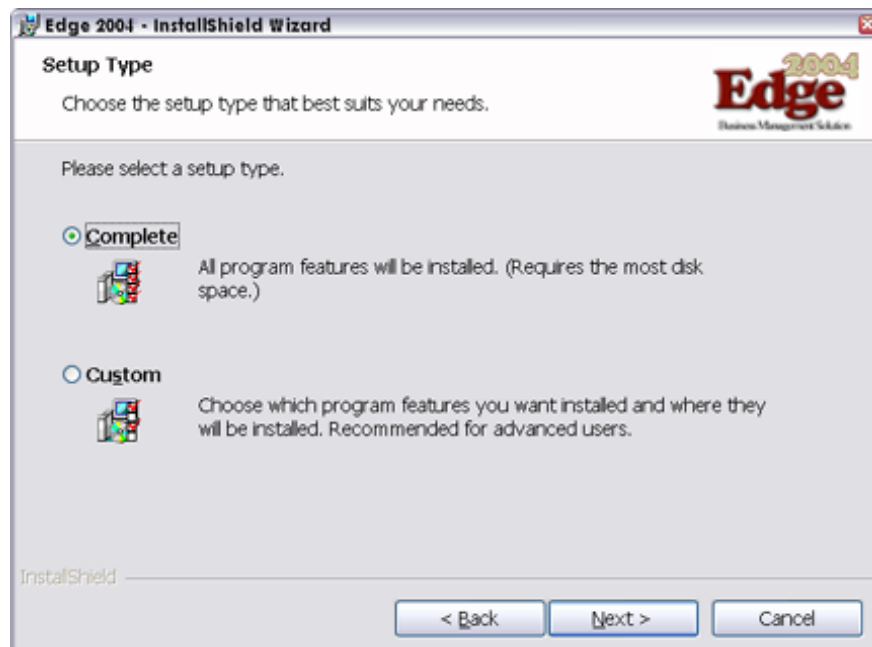
# edge 2004 installation guide

- Click the **Next** button and the Edge 2004™ **InstallShield Wizard** will display the **Customer Information** dialog box. Complete the **User Name** and **Organization Fields** and select an option for access to application.



The screenshot shows the 'Edge 2004 - InstallShield Wizard' window. The title bar reads 'Edge 2004 - InstallShield Wizard'. The main heading is 'Customer Information' with the instruction 'Please enter your information.' and the 'Edge 2004 Business Management Solution' logo. There are two text input fields: 'User Name:' containing 'IDS' and 'Organization:' containing 'IDS'. Below these, the text 'Install this application for:' is followed by two radio button options: 'Anyone who uses this computer (all users)' (which is selected) and 'Only for me (IDS)'. At the bottom left is the 'InstallShield' logo, and at the bottom right are three buttons: '< Back', 'Next >', and 'Cancel'.

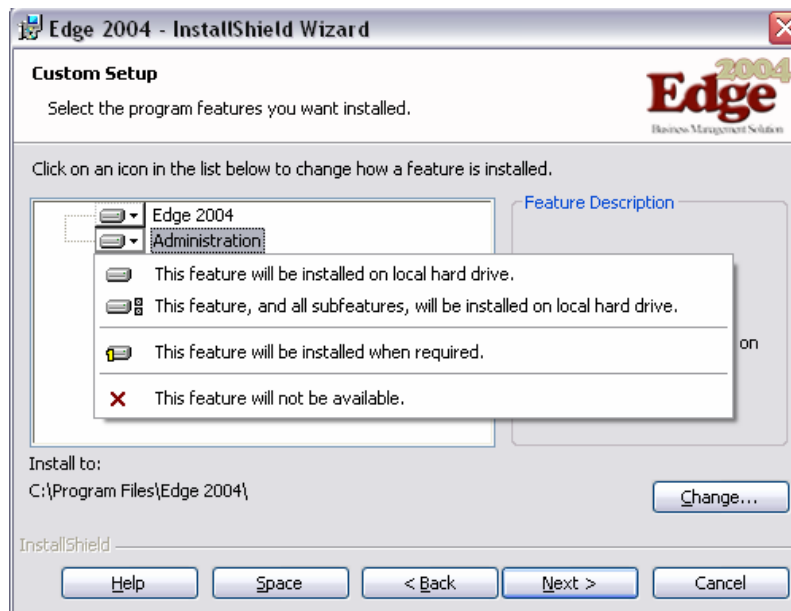
- Click **Next** to display the **Setup Type** dialog box. Select either **Complete** or **Custom**.



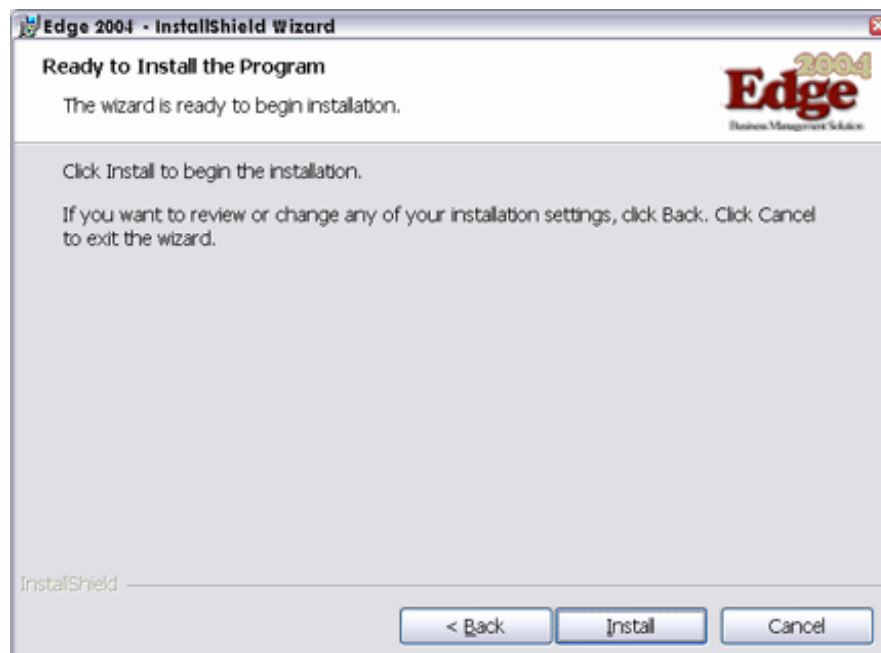
The screenshot shows the 'Edge 2004 - InstallShield Wizard' window. The title bar reads 'Edge 2004 - InstallShield Wizard'. The main heading is 'Setup Type' with the instruction 'Choose the setup type that best suits your needs.' and the 'Edge 2004 Business Management Solution' logo. Below this, the text 'Please select a setup type.' is followed by two radio button options: 'Complete' (which is selected) and 'Custom'. Each option has a small icon of a computer monitor and a description: 'Complete' says 'All program features will be installed. (Requires the most disk space.)' and 'Custom' says 'Choose which program features you want installed and where they will be installed. Recommended for advanced users.' At the bottom left is the 'InstallShield' logo, and at the bottom right are three buttons: '< Back', 'Next >', and 'Cancel'.

# edge 2004 installation guide

- a. To install all the program features select **Complete** and click **Next**. (Skip to number 9)
- b. Select **Custom** to choose the program features you want installed. Then click **Next** to display the **Custom Setup** screen and then click **Next**. The Custom Setup screen allows you to install the **Administration Module** feature.

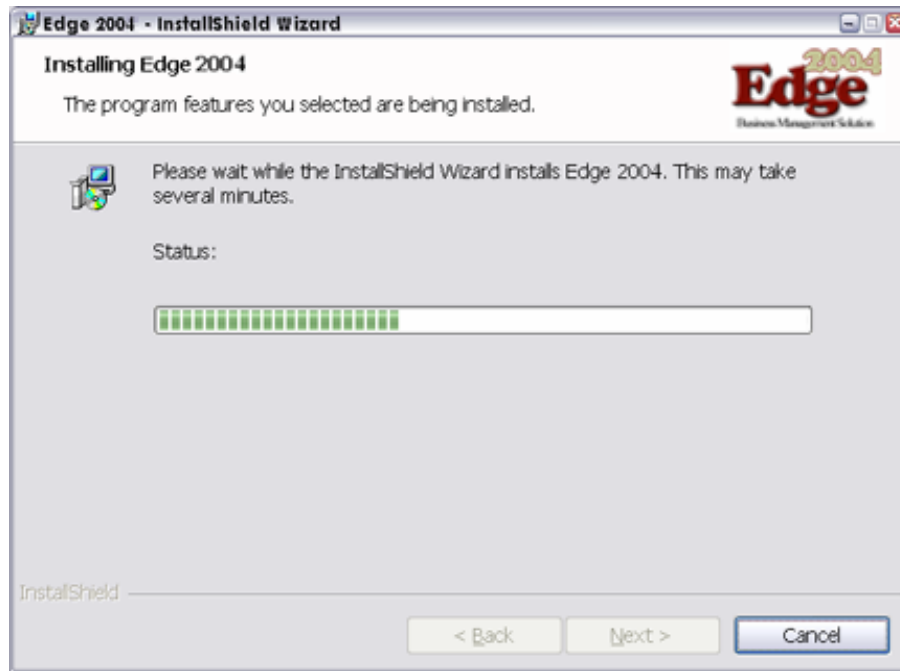


9. Click **Install** to begin the installation.

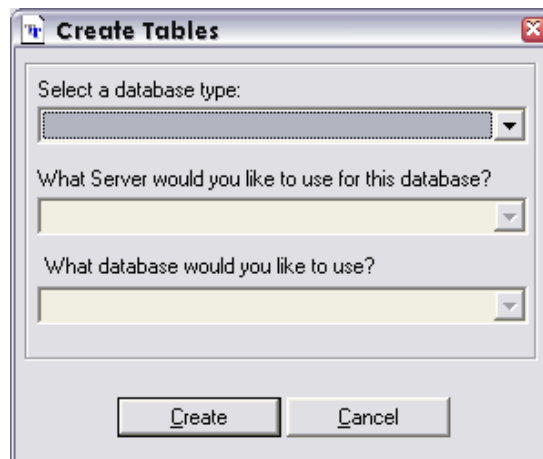


# edge 2004 installation guide

10. The **Installing Edge 2004** dialog box will show the progress of Edge 2004™ being installed



11. During the installation you will be prompted with the **Create Tables** screen.
- If the default Access database is going to be used, click **Cancel** and the installation will continue.
  - If a SQL database is going to be used, this is where you would select the database type, the server it resides on, and which database is to be used. Click **Create** to create the SQL database tables. (*Note: A blank SQL database must already exist.*) (See **Chapter 3** in **User Guide** for further details)

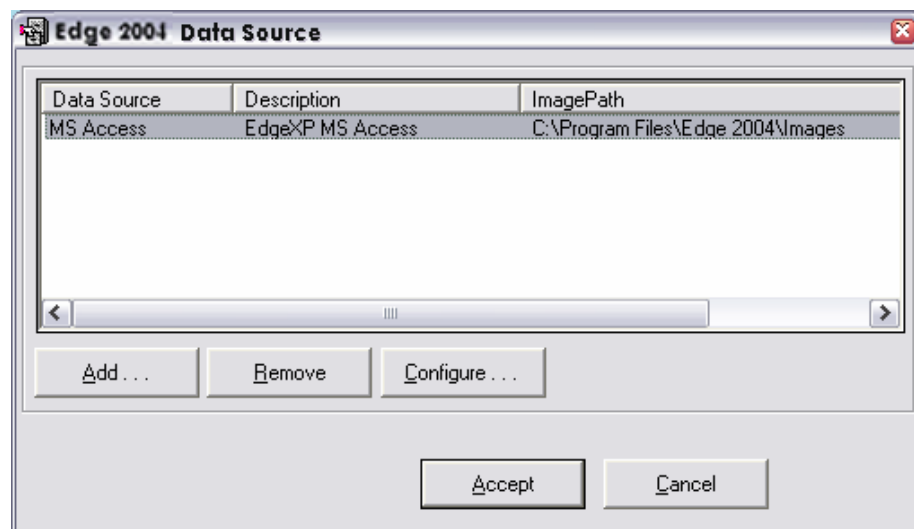


# edge 2004 installation guide

12. If SQL database tables are created, the **Connect** screen allows the administrator to select the type of authentication for the SQL database. Click **Connect** once the type of authentication is chosen.



13. Next, the **Data Source** dialog box allows you to add, remove, and configure the **Data Source** you wish to use. (For additional information see **Chapter 1** and **Chapter 3** in the **User Guide**). Click **Accept** to finish installation.



# **edge 2004** *installation guide*

14. When Edge 2004™ is successfully installed you will get the following screen. Click finish to exit the InstallShield Wizard.



**Note:** The default username for Edge 2004 is 'edgeuser' and the password is 'demo'