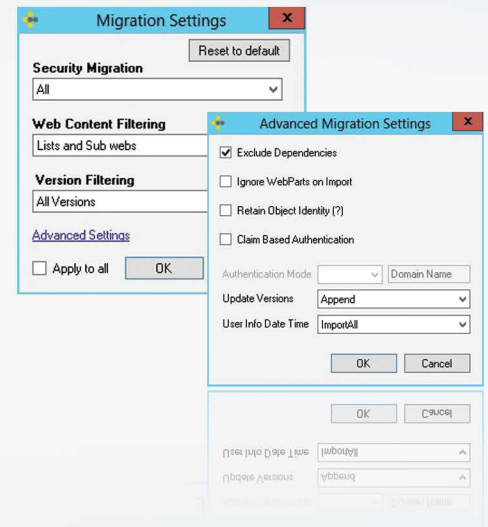
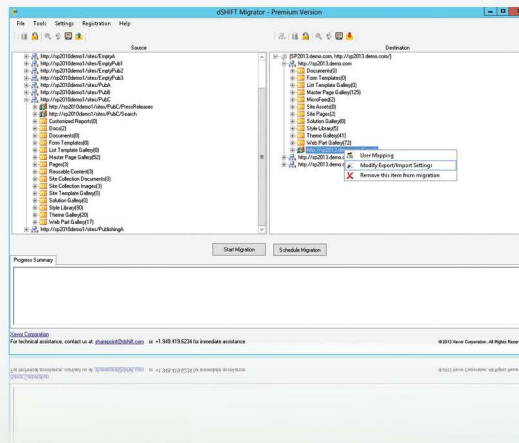
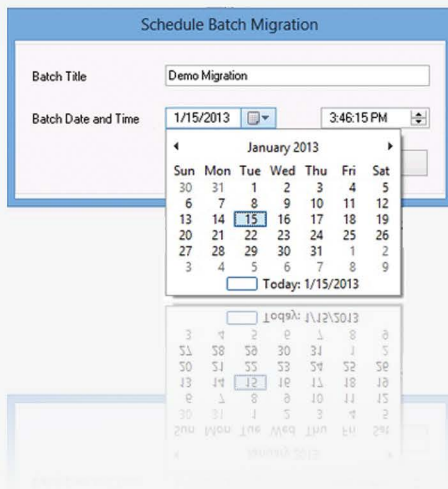


# dSHIFT Migrator for SharePoint 2013

Accelerate your SharePoint 2013 migration project with the dSHIFT SharePoint Migrator for SharePoint 2013. Easily move content, users, workflows, permissions and metadata from Windows SharePoint Services (WSS) 3.0, Microsoft Office SharePoint Server (MOSS) 2007, SharePoint 2010 and Office 365 (SharePoint Online) to SharePoint 2013 or SharePoint 2013 Online. The simplicity of its drag-and-drop interface makes it easy to restructure your SharePoint sites and site collections during the migration process, while preventing loss of fidelity.



## WORKFLOWS

Easily bring your existing approval workflows to SharePoint 2013. Avoid time-consuming reconfiguration and maintain existing associations with users and documents.

## USER MAPPING

With intelligent user mapping capabilities, dSHIFT associates user accounts on the source server to similarly named user accounts on the destination server.

## TAXONOMY

dSHIFT now assists in the migration of SharePoint term store items by automatically mapping your source server's taxonomy term store hierarchy to corresponding items on your destination server.

## RESTRUCTURING

Use dSHIFT's intuitive drag-and-drop style interface to easily select the SharePoint sites you wish to migrate. Rearrange sites and sub-sites on the fly to improve your SharePoint site hierarchy.

For further information, email at [sharepoint@dshift.com](mailto:sharepoint@dshift.com) or call +1 800 949 5719

dSHIFT by Xavor Corporation  
8105 Irvine Center Drive, Ste 780,  
Irvine, California 92618, USA

Tel: +1 949 264 1472  
Fax: +1 949 264 1471  
Website: [dshift.com](http://dshift.com)

COMPATIBILITY					
Source	Destination				
	WSS 3.0	MOSS 2007	SharePoint 2010	SharePoint 2013	Office 365 (SharePoint Online)
WSS 3.0	✓	✓	✓	✓	✓
MOSS 2007		✓	✓	✓	✓
SharePoint 2010			✓	✓	✓
SharePoint 2013			✓	✓	✓
Office 365 (SharePoint Online)				✓	✓

## FEATURES

- ✦ User Mapping
- ✦ Batch Migration
- ✦ Support for Remote or Cross-Domain Migrations
- ✦ Selective Content Migration
- ✦ Restructure or Reorganize Site Collections and Sites
- ✦ Scheduled Migration
- ✦ Site-Wide Notification Banners
- ✦ Backup and Restore
- ✦ Claim-Based Authentication
- ✦ Granular Item-Level Migration
- ✦ Governance Rules
- ✦ Column and Content Type Mapping
- ✦ Site Locks and Site Collection Management
- ✦ Taxonomy Term Store Mapping
- ✦ Workflows and Workflow History

## SUPPORTED CONTENT

- ✦ All OOTB Site Collections, Sites, Sub-Sites, Document Libraries, Lists and Items
- ✦ Site, List, Folder and Item-Level Permissions
- ✦ All List Types (List Views, Discussion Boards, Surveys, Image Libraries, Calendar and Events, Link Lists, Issue Lists, Custom Lists, etc.)
- ✦ All Item Versions and Associated Metadata
- ✦ Look-Up Fields and Lists
- ✦ Blogs, Wikis and Enterprise Wikis
- ✦ Publishing Sites
- ✦ Meeting Workspaces
- ✦ Document and Form Libraries
- ✦ Multi-level Folders
- ✦ Custom Site Templates
- ✦ Web Parts
- ✦ Navigation and Update URLs and Links

For further information, email at [sharepoint@dshift.com](mailto:sharepoint@dshift.com) or call +1 800 949 5719

dSHIFT by Xavor Corporation  
 8105 Irvine Center Drive, Ste 780, Irvine, California 92618, USA  
 Tel: +1 949 264 1472  
 Fax: +1 949 264 1471  
 Website: [dSHIFT.com](http://dSHIFT.com)