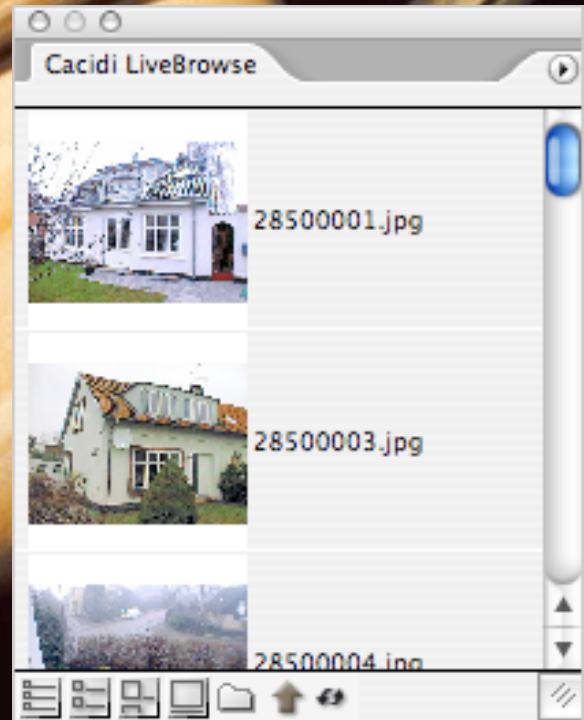
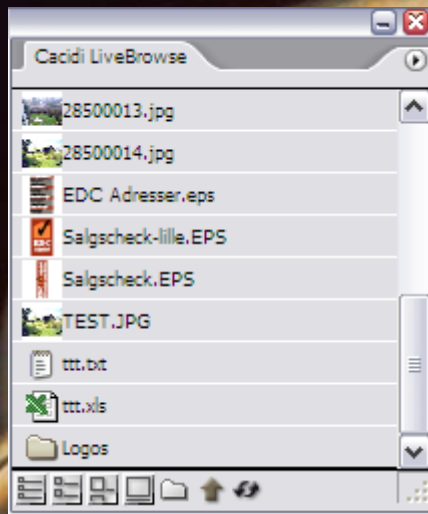




Cacidi LiveBrowse

Student guide - version 1



Tutorial

- automating graphic production with Adobe InDesign



www.cacidi.com



Cacidi LiveBrowse

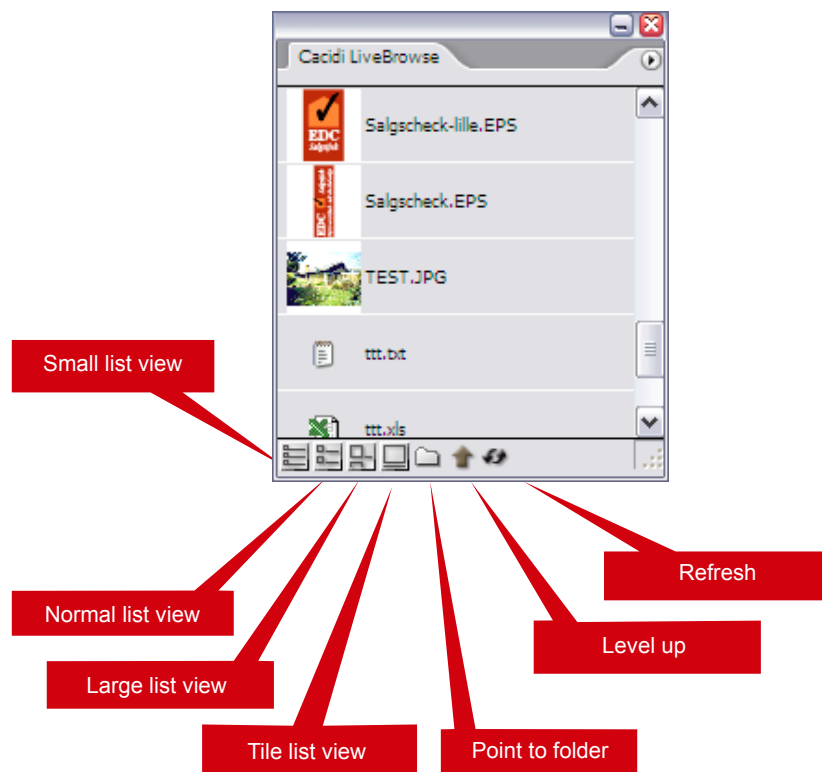
Student guide - version 1

The Cacidi LiveBrowse user interface

With the Cacidi LiveBrowse plug-in you can browse your harddisk for pictures and preview them directly in InDesign before drag n' dropping them to your InDesign project. You can even drag n' drop textfiles, excel files and all other formats supported by InDesign, directly to your InDesign project from the LiveBrowse panel.

The Cacidi LiveBrowse panel consists of four different list views, a folder icon for pointing directly to folders on your harddrive, a "level up" button and a refresh button.

PANEL VIEW





Cacidi LiveBrowse

Student guide - version 1

Using the plug-in

To select the folder or drive to browse, simply click the "point to folder" button



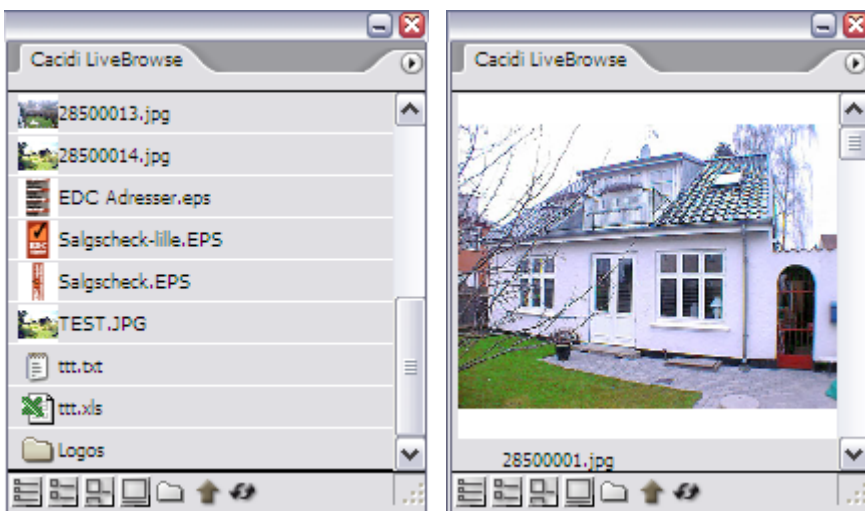
browse to the wanted location and click apply. The LiveBrowse panel now lists previews of the files found in the chosen location. To view files located in a sub-directory, find the folder in the list view and double-click it. To return to the previous folder, simply click the level-up button.



Now choose your view of choice (small, normal, large or tile list view) and drag n' drop the picture or file you want to your InDesign document.



If you've made changes on your harddrive since opening the plug-in, no need to restart InDesign, just click the update button and the changes will be reflected instantly in the LiveBrowse panel.



www.cacidi.com