

How to make a high resolution barcode image and save it as a TIF.

©2010 Copyright by Lars Sams

Please note that Barcode Image Maker Pro includes a 750+ pages manual and that additional information can be found in the manual. You will need Adobe Reader 7 or better to be able to view the manual.

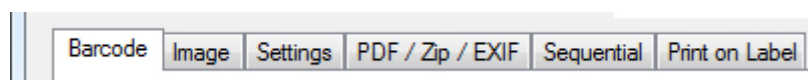
Some sample files have been included in the setup file and they are located at Documents\Barcode Image Maker Pro\

The PDF manual is at Start > All Programs > Shareware by Lars Sams > Barcode Image Maker Pro

Let's get started.


Run Barcode Image Maker Pro

Make sure you have selected the Barcode TAB. (Please look at the Picture below)

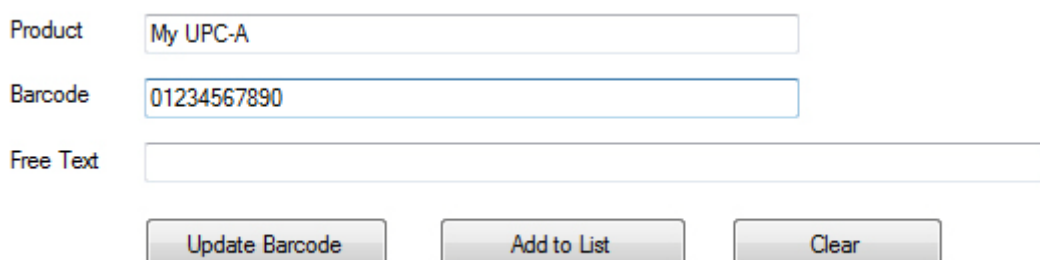


Add a UPC-A

Select the UPC-A barcode in the Select Barcode area. (Please look at the Picture below)

A screenshot of a dropdown menu titled 'Select Barcode'. The menu is open, showing a list with 'UPC-A' selected and highlighted. A small downward arrow is visible on the right side of the dropdown box.

Fill in the information for the barcode. The UPC-A needs 11 digits, the last digit (12th digit) is the checksum and will be added automatically. All but the Barcode is optional. (Please look at the picture below)

A screenshot of the input fields for creating a barcode. It includes three text boxes: 'Product' with the text 'My UPC-A', 'Barcode' with the text '01234567890', and 'Free Text' which is empty. Below these fields are three buttons: 'Update Barcode', 'Add to List', and 'Clear'.

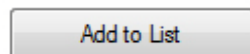
The Barcode is shown in the Barcode Area. (Please look at the Picture below)



Barcode Image Maker Pro has predefined GS1 recommended size for the barcode and you can quickly change the size by using the Rec.Size and Height in the Tool Bar (icon bar). We use the default, Rec.Size 100% and Height 100%. (Please look at the Picture below)

Rec.Size 100% ▾ Height: 100% ▾

Click on the Add to List button. (Please look at the Picture below)



The UPC-A barcode have been added to the Barcode List (Please look at the Picture below)

[illegible]

Add an EAN-13

Now we will make an EAN-13.

Select the EAN-13 barcode in the Select Barcode area. (Please look at the Picture below)

Select Barcode
EAN-13 ▼

Fill in the information for the barcode. The EAN-13 needs 12 digits, the last digit (13th digit) is the checksum and will be added automatically. All but the Barcode is optional. (Please look at the picture below)

Product	<input type="text" value="My EAN-13"/>
Barcode	<input type="text" value="491234567890"/>
Free Text	<input type="text"/>

The Barcode is shown in the Barcode Area. (Please look at the Picture below)



Barcode Image Maker Pro has predefined GS1 recommended size for the barcode and you can quickly change the size by using the Rec.Size and Height in the Tool Bar (icon bar). We use the default, Rec.Size 100% and Height 100%. (Please look at the Picture below)

Rec.Size 100% ▾ Height: 100% ▾

Click on the Add to List button. (Please look at the Picture below)

Add to List

The EAN-13 barcode have been added to the Barcode List (Please look at the Picture below)

[illegible]

Save the barcodes


Now we will save both the UPC-A and the EAN-13, right click in the Barcode List and click on Check all Items. (Please look at the Picture below)

Product	Barcode	Digit Sup.	Free Text	Type
<input checked="" type="checkbox"/> My UPC-A	01234567890			UPA0
<input checked="" type="checkbox"/> My EAN-13	491234567890			F130

- Check all Items
- Uncheck all Items
- Delete All checked Items
- Check barcode Item ▶
- Delete Item

In the Barcode Panel you will be able to set the resolution (dpi) you would like to save the barcode images at. If you don't fill in the dpi, 96 dpi will be used as default, I have filled in 2400 dpi. (Please look at the Picture below)

Barcode



4 912345 678904

☒ Select found item
☐ Delete found item
☐ Don't Delete checked or Selected items

Manual Barcode Settings

Clear Settings below

☐ Fill in / Use settings for the barcode

Resolution (Dpi)

Width x Height 2400 dpi

☒ User Setting
☐ Use Printer Resolution
☐ 72 dpi

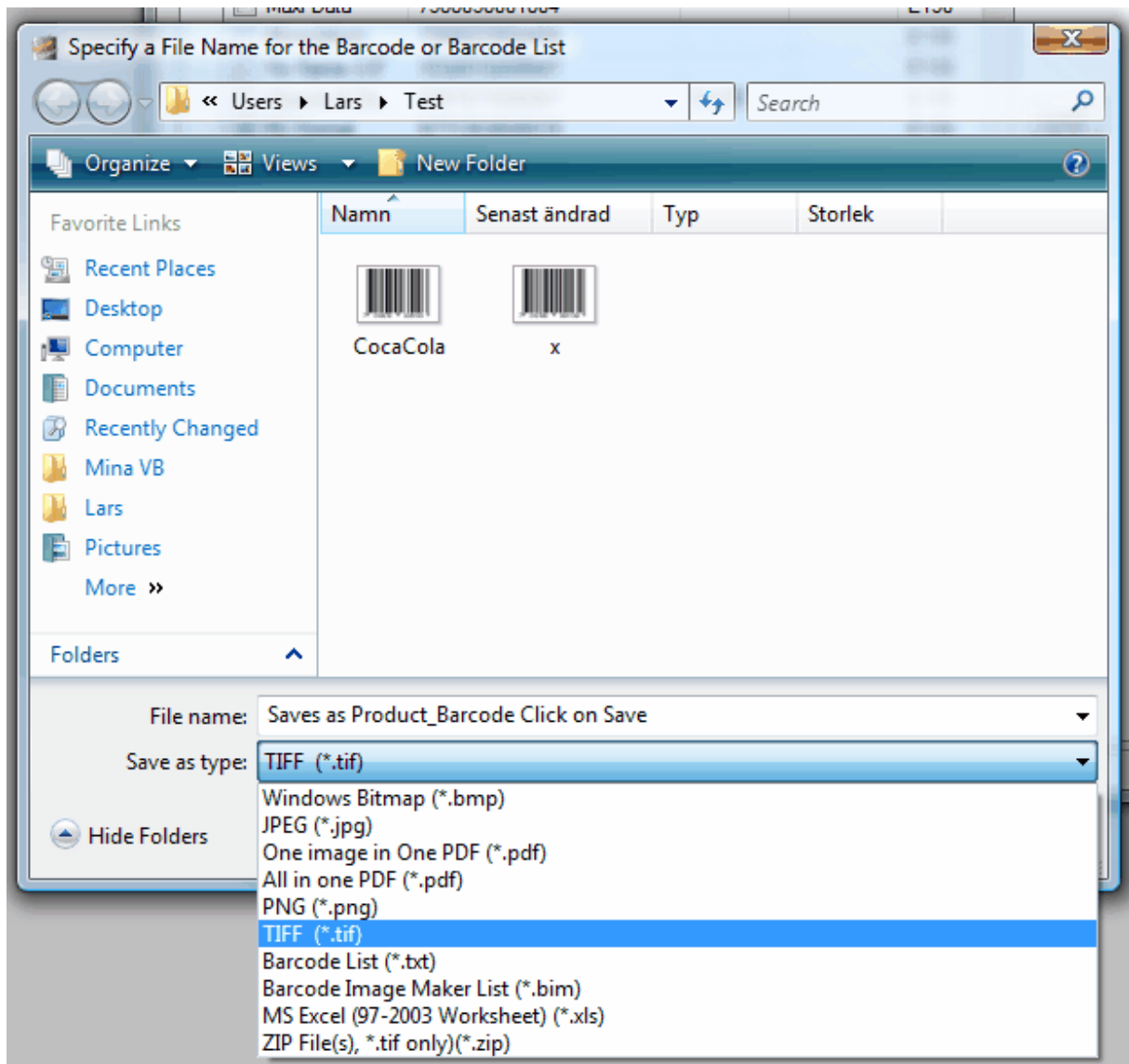
One Pixel is 0,42 Mils.
One Pixel is 0,000416667 In.

Now it's time to save the UPC-A and EAN-13 barcode. As we are saving two barcodes we will NOT be able to name any of them as if it was possible only one would be saved as they would both have the same file name, so the barcodes are saved Product_Barcode.tif, if you only save one you will be able to name the file.

Click on the Save as icon (Please look at the Picture below) or click on the File menu and then click on the Save as.



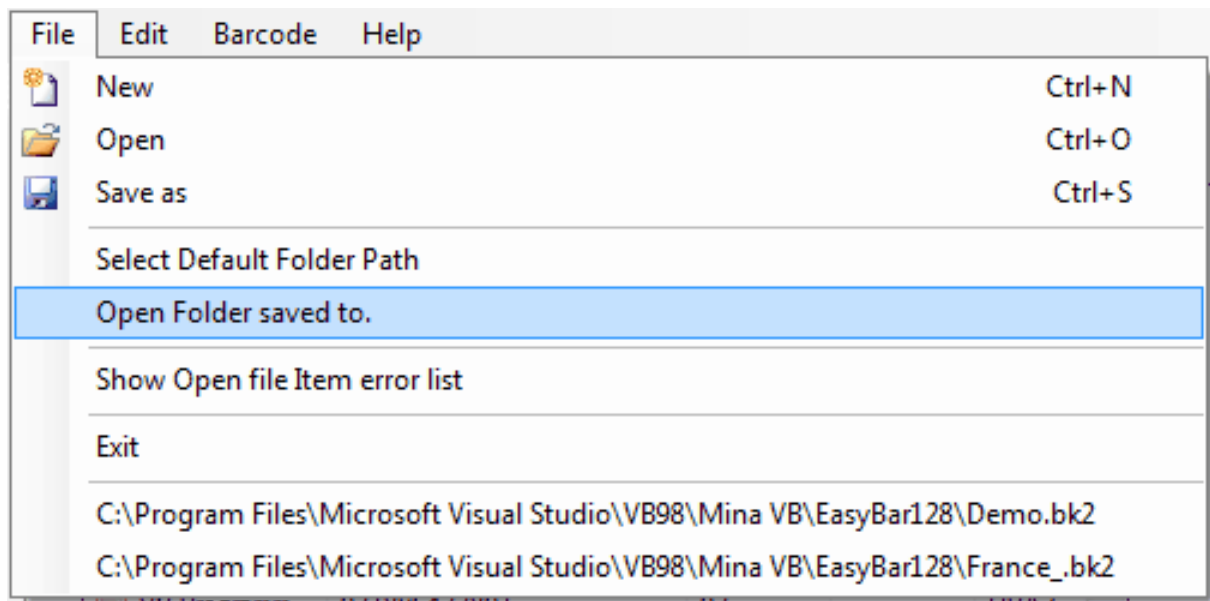
The Save As dialog (Please look at the Picture below). Select TIFF (*.tif) as we want to save the barcodes in the TIF file format.



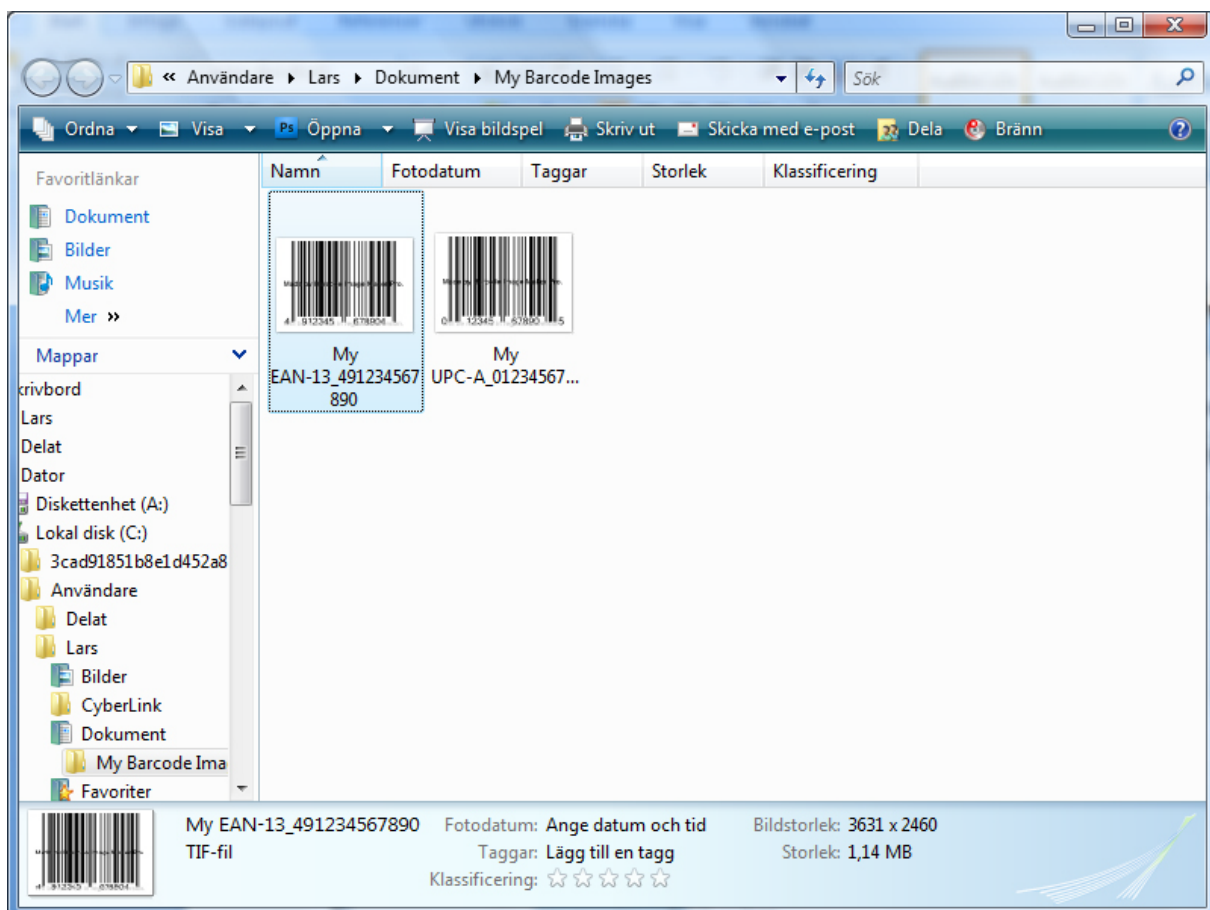
Click on the Save button and the barcodes will be saved.

View the saved barcodes

Click on the File menu and then click on (Please look at the Picture below)



The folder you saved the barcode images to will show. (Please look at the Picture below)



Contact

Now you know how to save high resolution barcode images. If you have any questions, please e-mail info@barcodemaking.com

The homepage is at www.barcodemaking.com

Get Barcode Image Maker Pro.

Barcode Image Maker Pro is only USD \$68 (as low as USD \$53, depending on the number of copies ordered.)



Barcode Image Maker Pro., **Product ID: 300314279** (Product ID: is valid for ShareIt! only).

Order Page:

<https://secure.shareit.com/shareit/checkout.html?productid=300314279&language=English>



Barcode Maker., **Product ID: 32763-11** (Product ID: is valid for regNow only)

Order Page: http://www.regnow.com/softsell/nph-softsell.cgi?ss_short_order=true&items=32763-11